

**LIST OF FIELD MODIFICATIONS  
EMERGENCY & MEDICAL KITS - GENERAL**

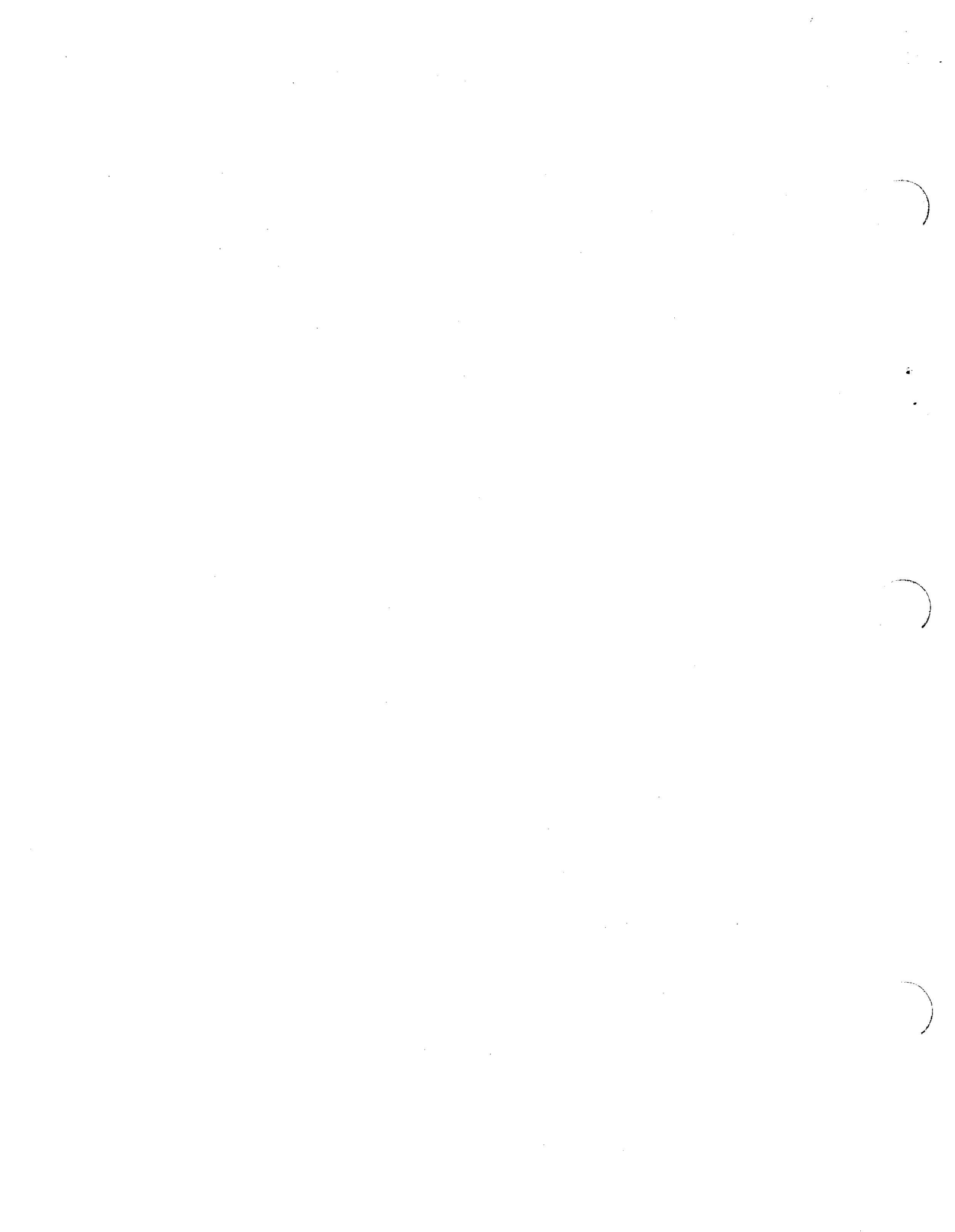
(This EO replaces EO 55-15-6A dated 8 May 63)

**TABLE OF CONTENTS**

<b>LATEST DATE</b>	<b>EO NO</b>	<b>TITLE</b>
	55-15-6A/1 to /3	(Rescinded)
*	/4	(Rescinded) Primers Stove Burner
*	/5	(Rescinded) Fusee-Protective Handle
	/6 to /10	(Rescinded)
*	/11	(Rescinded) Survival Kit Fishing - Wrapping of Pork Rind
	/12 to /13	(Rescinded)
	/14	(Replaced by EO 55-15-6A/15)
	/15	(Rescinded)
*	/16	(Rescinded) Polyethylene Protective Cover-Matches Safety Windflammer
23 Aug 61	/17	Ice Chisel Reinforcement 15D/182
22 Jun 62	/18	Safety Matches - Packaging
*26 Nov 63	/19	Radiac Meter Protective Plate

\* Asterisks appearing opposite entries denote changes since last issue.

ISSUED ON AUTHORITY OF THE CHIEF OF THE AIR STAFF



## MODIFICATION

# RADIAC METER PROTECTIVE PLATE

EQUIPMENT AFFECTED: 9C/6665-00-679-2879 Radiac Meter

BY WHOM WORK WILL BE PERFORMED: Operating Units

WHEN WORK WILL BE PERFORMED: At or before the next Survival kit  
Periodic Inspection

RCAF FORM ENTRIES: E133 Survival Kit Log Book

MODIFICATION OF SPARES IN STOCK: To be modified before installing in kits

### PURPOSE

1 A metal plate has been designed to protect the radiac meter and to prevent the normal forces encountered within the survival kits to depress the "TEST" or "READ" buttons, with consequent depletion of battery life.

### MODIFICATION DATA

2 Modification is to be carried out as follows:

(a) The plate is to be manufactured locally to the same dimensions as the meter from at least .064 gauge Alclad with felt pads cemented at each end as shown in Figure 1.

(b) The plate is taped to the meter as shown in Figure 2 before installing in the survival kits.

### PARTS REQUIRED

3 The following material is required:

RCAF REF.	PART	DESCRIPTION	QTY.
30B/224		Sheet Alclad, 24ST or equivalent	AR

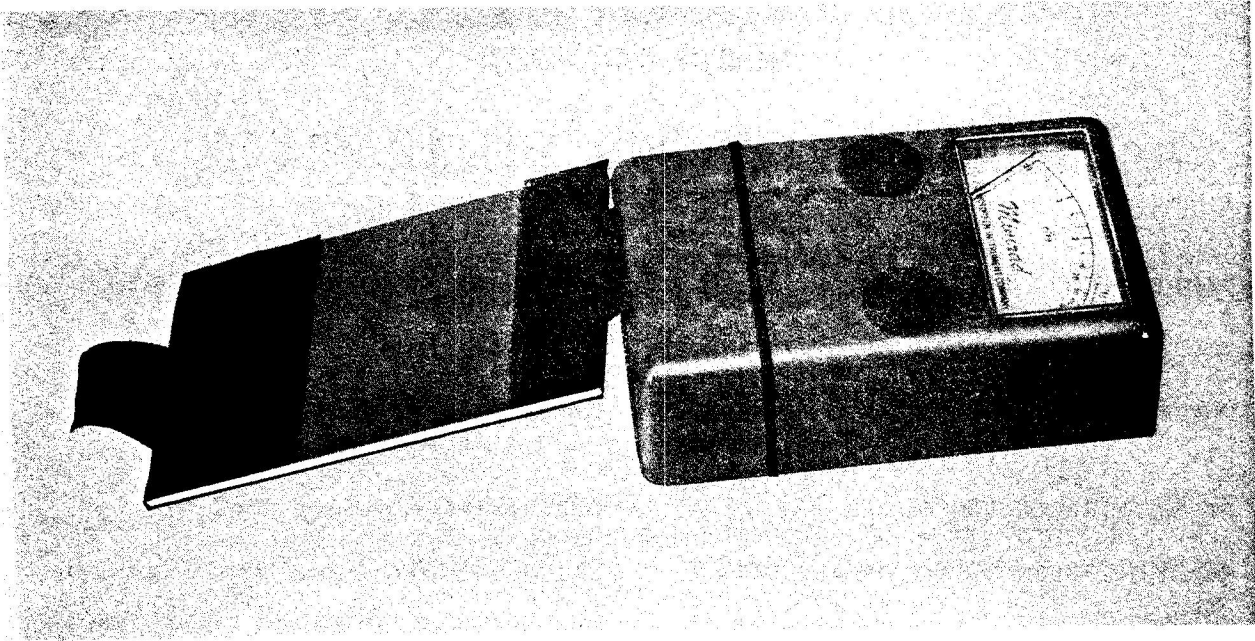


Figure 1

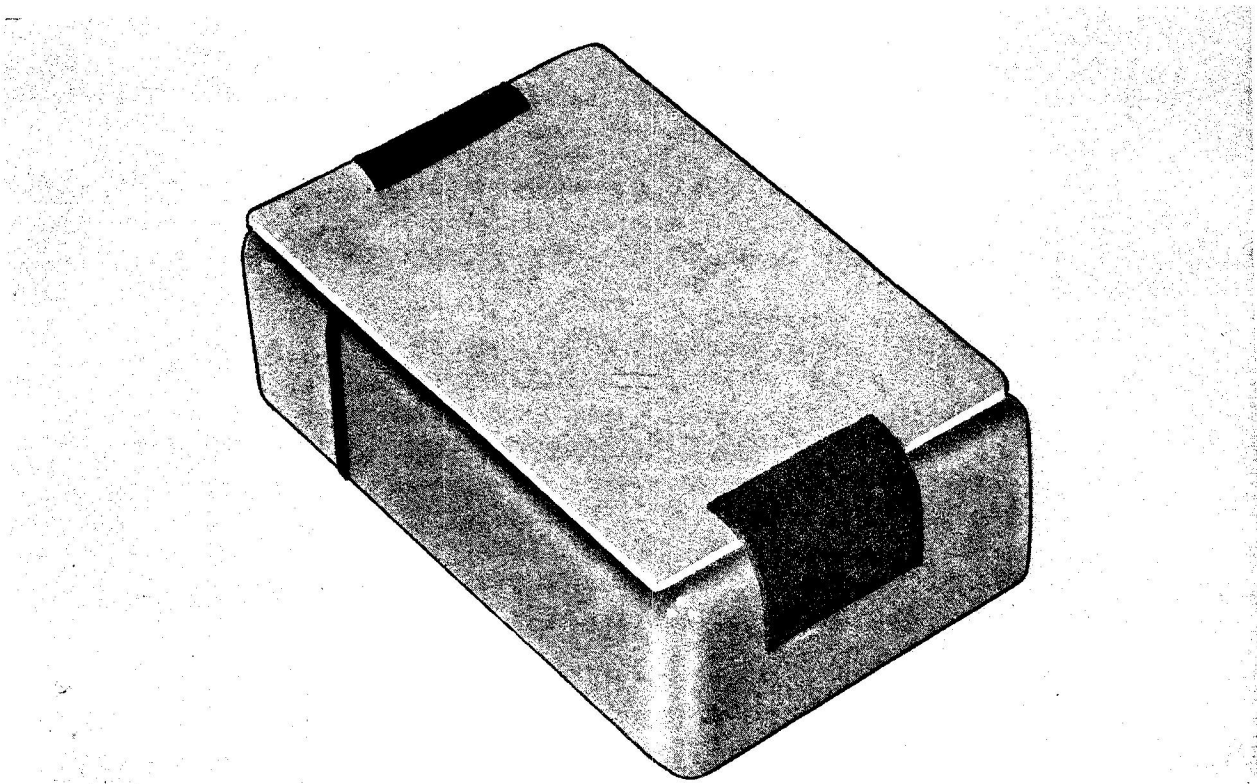


Figure 2

## MODIFICATION

# SAFETY MATCHES - PACKAGING

EQUIPMENT AFFECTED:	Ref. 15D/64 Matches Safety Windflammer and Ref. 15D/12 Matches Safety
BY WHOM WORK WILL BE PERFORMED:	Operating Units
WHEN WORK WILL BE PERFORMED:	Next Periodic Inspection
RCAF FORM ENTRIES:	E133 Emergency kit log books
MODIFICATION OF SPARES IN STOCK:	To be modified before installing in kits

### PURPOSE

1 To provide a more satisfactory method of packaging safety matches installed in emergency and survival kits.

### MODIFICATION DATA

2 The following is the sequence of operations:

(a) The present method of packaging safety matches for installation in survival kits is not considered satisfactory. Pressure on the container may break particles loose from the striking head and should these particles work their way out of the container they could ignite on the striking surface.

(b) All safety matches are to be packaged in the following manner:

(1) The drawer portion is to be reinforced with Ref. 66S/241 paper board show card 14 ply along both sides and ends.

(2) Ends of the closed container are to be completely covered with Ref. 33G/179 tape adhesive pressure sensitive.

### NOTE

Striking surface on the container is not to be covered.

(3) The whole container is to be covered tightly with cellophane or clear vinyl.

(4) Finally the covered container is to be placed in a clear vinyl pouch and closed by heat sealing.

## PARTS REQUIRED

3 The following parts are required:

RCAF REF.	PART	DESCRIPTION	QTY.
66S/241		Paper board show card 14 ply	Sheets ea. 1 44" x 28"
		One sheet should be sufficient for each safety equipment section and excessive quantities are not to be ordered	
33G/179		Tape adhesive pressure sensitive	AR

## PARTS RENDERED SURPLUS OR OBSOLETE

4 Nil.

## WEIGHT, LOADING AND BALANCE DATA

5 NA.

## ADDITIONAL DATA

6 It is recommended that a paper cutter be used to cut the paper board in pieces of the required dimensions in order to obtain a clean cut.

ISSUED ON AUTHORITY OF THE CHIEF OF THE AIR STAFF

Prepared by:  
AMC/SAMO/PA3

**MODIFICATION**

**ICE CHISEL REINFORCEMENT 15D/182**

EQUIPMENT AFFECTED: Ice Chisel  
 BY WHOM WORK WILL BE PERFORMED: Operating Units  
 WHEN WORK WILL BE PERFORMED: On or before next Periodic Inspection  
 RCAF FORM ENTRIES: NA  
 MODIFICATION OF SPARES IN STOCK: To be modified prior to use

**PURPOSE**

1 To strengthen the ice chisel at point of weld, refer to Figure 1.

**MODIFICATION DATA**

2 Two pieces of Ref. 30B/1238 Angle Iron 3 in. long are to be welded to ice chisel shank refer to Figure 2.

**PARTS REQUIRED**

3 The following parts are required:

RCAF REF.	PART	DESCRIPTION	QUANTITY
30B/1238		Angle iron 90 degrees 1/2" x 1/2" x 1/8" thick x 3" lg.	ea. 2

**PARTS RENDERED SURPLUS OR OBSOLETE**

4 Nil.

**WEIGHT, LOADING AND BALANCE DATA**

5 Negligible 3-9/25 ozs.

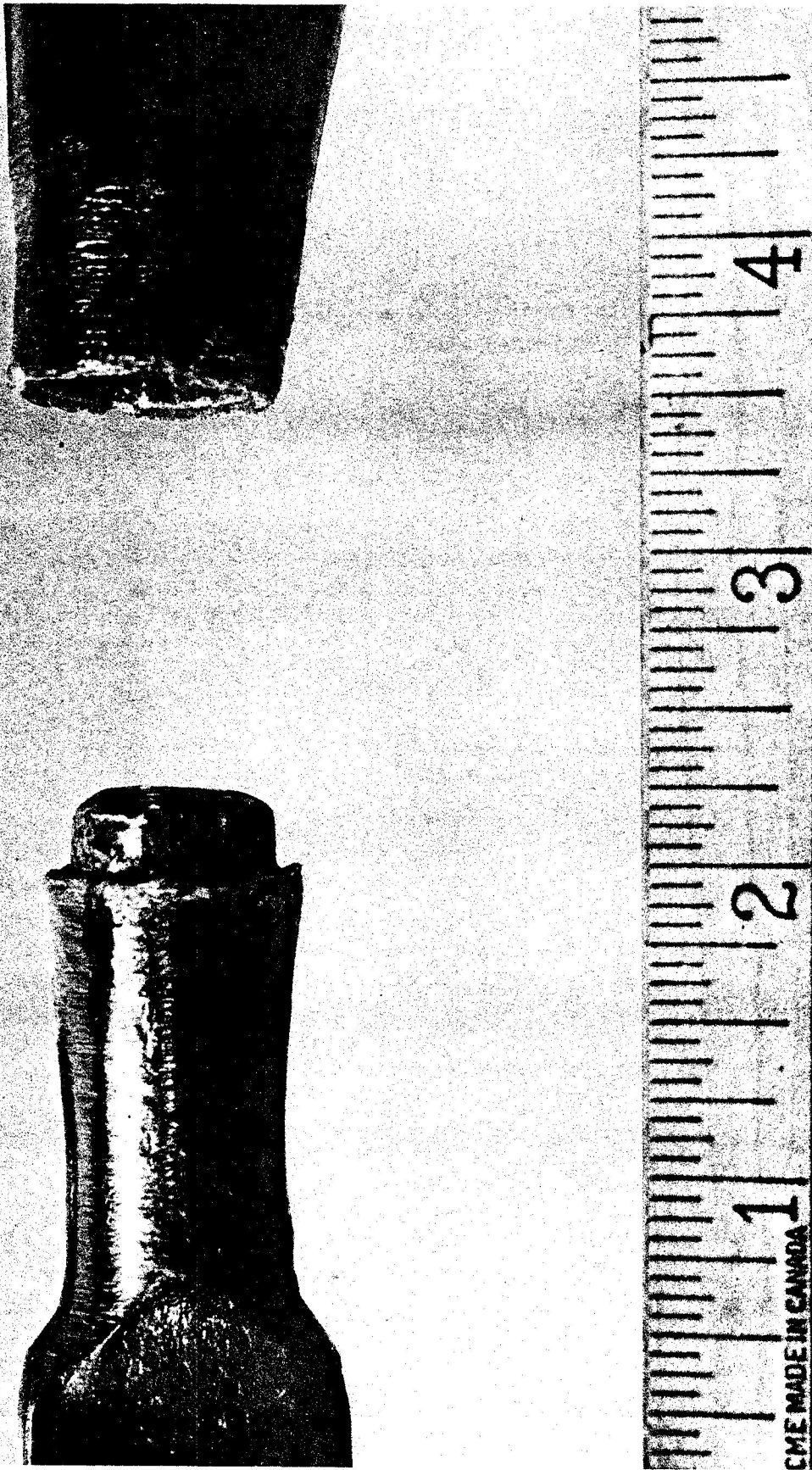


Figure 1



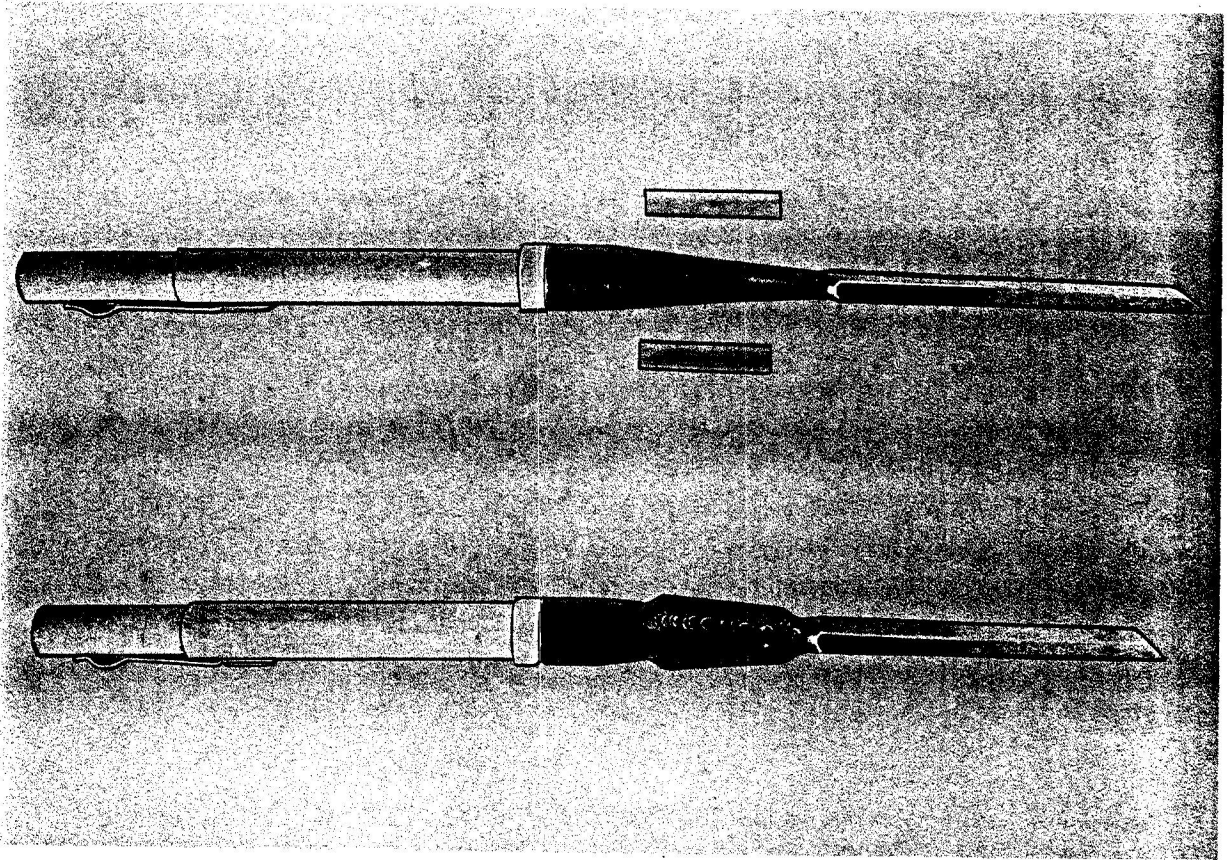


Figure 2

ISSUED ON AUTHORITY OF THE CHIEF OF THE AIR STAFF

Prepared By:  
AMC/SEGO/GP

